

POTTER'S

choice

 Cone 5/6

AMACO
EST. 1919
brent

POTTER'S

choice

Tiles are AMACO 46-M Buff Stoneware Clay. Fired to Cone 5.

Category: Mid-High Fire Glaze
Firing Temperature: Cone 5 - Cone 6



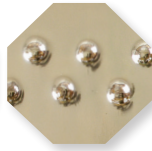
*Except for PC-4 Palladium and PC-64 Aventurine



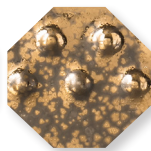
PC-1 Saturation Metallic



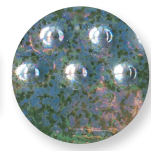
PC-2 Saturation Gold



PC-4 Palladium



PC-9 Vintage Gold



PC-10 June Bug



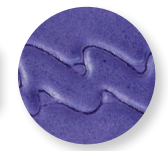
PC-11 Blue Spark



PC-12 Blue Midnight



PC-15 Satin Oribe



PC-16 Purple Crystal



PC-17 Honey Flux



PC-20 Blue Rutile



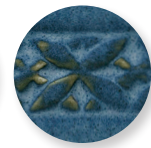
PC-21 Arctic Blue



PC-22 Blue Stone



PC-23 Indigo Float



PC-24 Sapphire Float



PC-25 Textured Turquoise



PC-26 Blue Lagoon



PC-27 Tourmaline



PC-28 Frosted Turquoise



PC-29 Deep Olive Speckle



PC-30 Temmoku



PC-31 Oatmeal



PC-32 Albany Slip Brown



PC-33 Iron Lustre



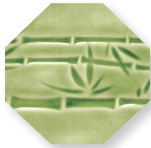
PC-34 Light Sepia



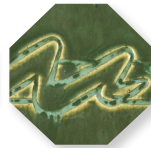
PC-36 Ironstone



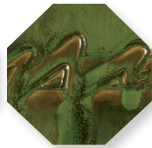
PC-38 Iron Yellow



PC-40 True Celadon



PC-41 Vert Lustre



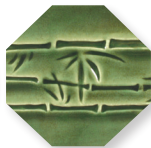
PC-42 Seaweed



PC-43 Toasted Sage



PC-44 Sage



PC-45 Dark Green



PC-46 Lustrous Jade



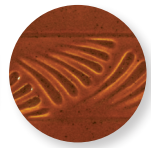
PC-47 Emerald Falls



PC-48 Art Deco Green



PC-49 Frosted Melon



PC-52 Deep Sienna Speckle



PC-53 Ancient Jasper



PC-55 Chun Plum



PC-56 Ancient Copper



PC-57 Smokey Merlot



PC-58 Tuscany



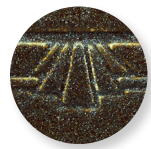
PC-59 Deep Firebrick



PC-61 Textured Amber



PC-62 Textured Amber Brown



PC-63 Cosmic Tea Dust



PC-64 Aventurine



PC-65 Black Aventurine



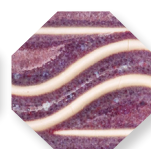
PC-66 Cosmic Oil Spot



PC-67 River Rock



PC-70 Copper Red



PC-71 Flambé

the POTTER'S CHOICE ADVANTAGE

- Mid-fire reduction looks in oxidation
- Great for layering with other Potter's Choice glazes, AMACO Celadons, or AMACO Shino glazes
- Variety of colors and finishes
- Available in 16oz or 1gal liquid for brushing

FAQ

Apply to... Cone 04 Bisqueware

Fire to... Cone 5 - Cone 6

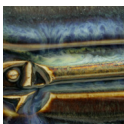
Food safe? Yes. All Potter's Choice glazes hold a food safety status except PC-4 Palladium, PC-9 Vintage Gold and PC-64 Aventurine.

TURN UP THE HEAT

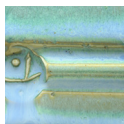
Potter's Choice glazes remain stable beyond Cone 6. Look below or head to www.amaco.com/pc to see all the interesting results achieved at Cone 10.



PC-2 Saturation Gold



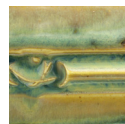
PC-20 Blue Rutile



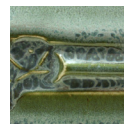
PC-21 Arctic Blue



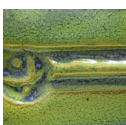
PC-23 Indigo Float



PC-25 Textured Turquoise



PC-27 Tourmaline



PC-28 Frosted Turquoise



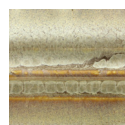
PC-30 Temmoku



PC-32 Albany Slip Brown



PC-33 Iron Lustre



PC-34 Light Sepia



PC-42 Seaweed



PC-43 Toasted Sage



PC-48 Art Deco Green



PC-52 Deep Sienna Speckle



PC-55 Chun Plum



PC-61 Textured Amber



PC-62 Textured Amber Brown

CLAY

Clay body can affect your work just as heavily as glaze. Check out how PC-40 True Celadon shifts from clay body to clay body.



No. 11 A-Mix White Stoneware Clay



No. 38 White Stoneware Clay



No. 46 Buff Stoneware Clay



No. 48 Stoneware Body with Grog



No. 480 Stoneware Body without Grog



No. 58 Warm Brown Stoneware Clay



No. 77 Terra Cotta Stoneware Clay

LAYERING

Head to www.amaco.com/layering for specs and to check out tons of other layering combinations!

Potter's Choice over Potter's Choice

PC-21
Oatmeal
over
PC-33
Iron Lustre



PC-41
Vert Lustre
over
PC-57
Smokey
Merlot



Potter's Choice over Celadon

PC-57
Smokey
Merlot
over
C-1
Obsidian



PC-21
Arctic
Blue
over
C-20
Cobalt



Potter's Choice over Shino

PC-27
Tourmaline
over
SH-12
Chai
Matte



PC-61
Textured
Amber
over
SH-41
Oolong
Gloss



Not getting the results you expected?

If your Potter's Choice pieces aren't turning out quite like ours, chances are you still aren't applying the glaze thick enough, especially when layering glazes. Everyone applies glaze differently, and a heavy hand for one person may be light for another. Go to www.amaco.com/how_tos and check out our "Brushing on Glazes" video to see how we achieve our results.



Glazing with Potters Choice



get INSPIRED

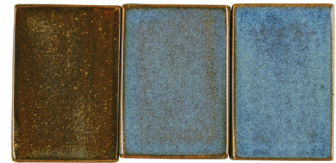


Visit our 5/6 Exchange page at [Facebook.com/groups/potterschoiceex](https://www.facebook.com/groups/potterschoiceex) to find inspiration, share results, and discuss with other AMACO customers!

APPLICATION

Most Potter's Choice Glazes benefit from a heavy-handed application. Below are just a few of the PC glazes with examples showing 1 coat, 2 coats, and 3 coats all fired to Cone 5.

PC-20
Blue Rutilé



PC-25
Textured
Turquoise



PC-33
Iron Lustre



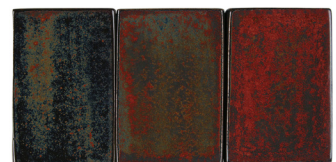
PC-34
Light Sepia



PC-42
Seaweed



PC-53
Ancient
Jasper



Questions? Call (800) 374-1600